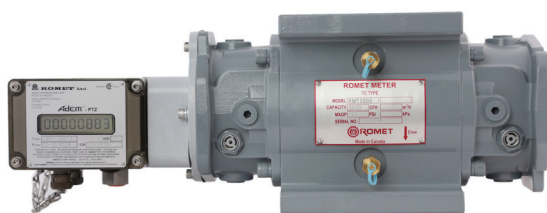


One Size Fits All With The Adem® Click

Romet Limited is pleased to offer our next generation of direct mount electronic instrumentation with the ability to account for temperature, pressure and supercompressibility. Available for both Romet and Dresser rotary gas meters, the Adem-PTZ has a compact, rugged, service-free, tamperproof and weather resistant design with a high level of accuracy and customization. The AdEM-PTZ comes standard with Romet's patented AdEM Click technology, allowing for seamless installation between Romet and Dresser rotary meters. With a nominal battery life of 15 years, the AdEM-PTZ makes an ideal upgrade to any system requiring instrumentation.



Remote Mount Adem-PTZ-r

The Romet Adem-PTZ is also available as a remote mount model. The proven platform of the Adem offers an alternative configuration to utilize the advanced measurement capabilities of Romet electronics. As a remote mount model, the Adem-PTZ-r provides the same ease of use and enhanced user experience as the Adem-PTZ but also can function as a pressure and temperature recorder to monitor local gas distribution and to electronically monitor pressure and temperature in the gas distribution and transmission grid.



Romet Adem[®]-PTZ

Romet offers a full line of mounting brackets for the installation of an AMI-AMR device of your choice. Our custom solutions can be easily field installed or mounted and programmed at our factory to reduce installation costs and improve reliability.



With the Adem Click you can carry one electronic corrector to fit all sizes and brands of rotary meters in your system.

- Simple
- Reduced inventory
- Reduced truck rolls

Specification

- 15 year nominal battery life
- Battery life indicated in months or percentages
- End of battery life warning
- Long lasting lithium battery
- Non-volatile EEPROM memory with full audit trail
- Up to 256 days of hourly readings
- 1024 daily logs
- 102 alarm logs stamped with time and date
- 166 event logs
- Live or fixed temperature and pressure compensation
- Fixed pressure factor (customizable)
- Total accuracy of +/-0.3% nominal (% of reading)
- Expands meter rangeability to 200:1 (direct mount)
- Standard ambient and gas temperature: -40F to +158F (-40C to +70C)
- Four output pulses available:
 - Two isolated volume pulse output channels (corrected and uncorrected)
 - One isolated pulse output for alarm or volume (corrected or uncorrected)
 - Additional isolated corrected pulse output channel for AMR/AMI devices
- Customizable pulse width and pulse spacing
- Serial communication port - RS232 or RS485
- Analog and cellular modem compatible
- Modbus protocol available
- Optional portable keyboard
- Highly sensitive RTD sensor
- Fixed/configurable parameters with multiple levels of security
- Standard sensor ranges 0-200 PSIG and 10-190 PSIA. Other pressure ranges available on request
- Standard with patented Adem Click technology (direct mount)
- Compatible with Itron, Sensus, Aclara, and other AMI/AMR devices
- Convenient one touch push button proving mode (direct mount)
- Quick and efficient proving with a Model 5 prover (direct mount)
- Rugged single scroll button with up to 15 display parameters
- Large, easy to read LCD 8 digits, 14 segment semi alpha-numeric
- UV resistant engineered polycarbonate enclosure
- Electronics sealed in silicon potting material for improved reliability and product life
- Weather resistant
- Adapter plates for Dresser LMMA & B3 meters (direct mount)
- Nominal 12 year calibration
 - 1 point temperature calibration
 - 3 point pressure calibration

Adem-PTZ-r Approvals/Certifications

- Intrinsically safe Class 1 Division 1 & 2, Group D
- CSA Approval 2277666
- ATEX Approval FTZU 08 ATEX Q 004 & FTZU 05 ATEX 0274X (Pending)
- IECEx Certification of Conformity - 60079 Intrinsic Safety (Pending)
- MID Approval SK 17- QD- SMU-017 & SK 13- MIO02- SMU005
- Third party qualification testing - Gas Technology Institute
- CE Declaration of Conformity
- Measurement Canada (Pending)

ROMET[®]
Innovate. Lead. Transform.

GAS METERS AND ELECTRONIC INSTRUMENTS

Phone 905-624-1591 USA 1-800-387-3201

www.rometlimited.com • email: romet@rometlimited.com

The values quoted are typical of normal production. They do not constitute a specification. Romet Limited reserves the right to change any information in this literature without notice. All of the information and data in this literature has been carefully compiled and thoroughly checked. However, Romet Limited will not assume responsibility for any possible omissions or errors.

ROMET and ROMET & DESIGN are registered trademarks of Romet Limited. Romet Limited's gas metering technology is protected under U.S. Patent No. 4,910,519 and 6,453,721 and Canadian Patent No. 1,293,568.